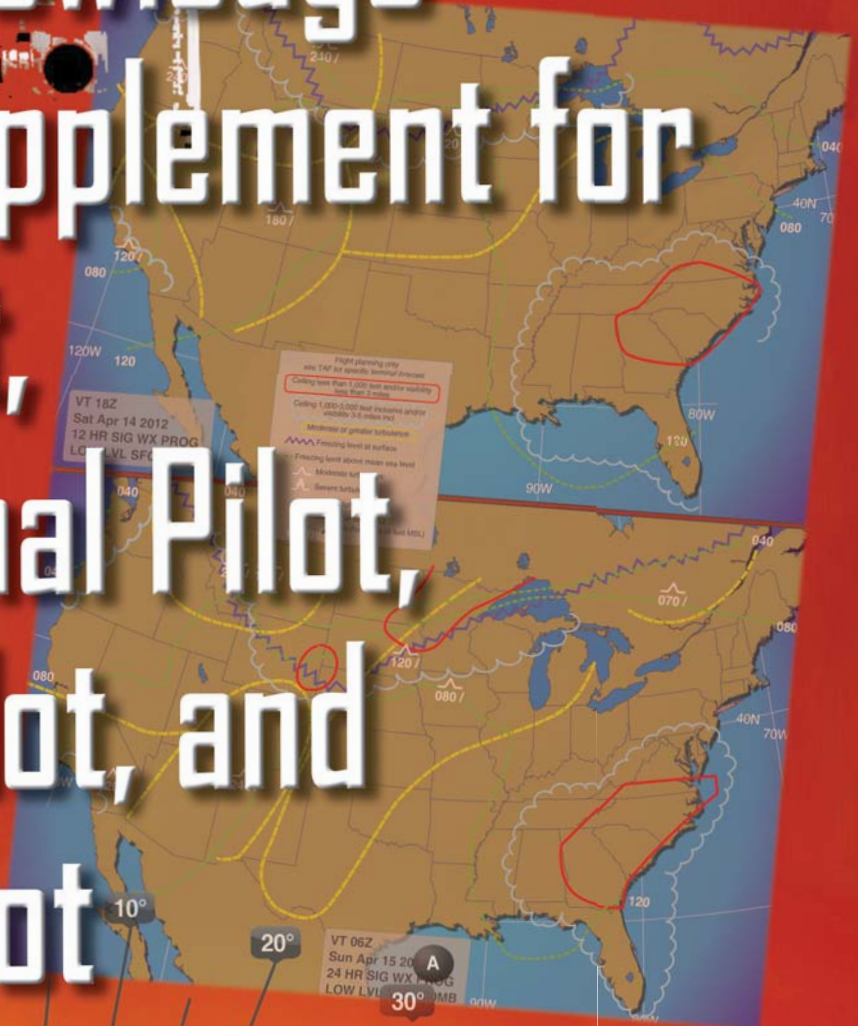
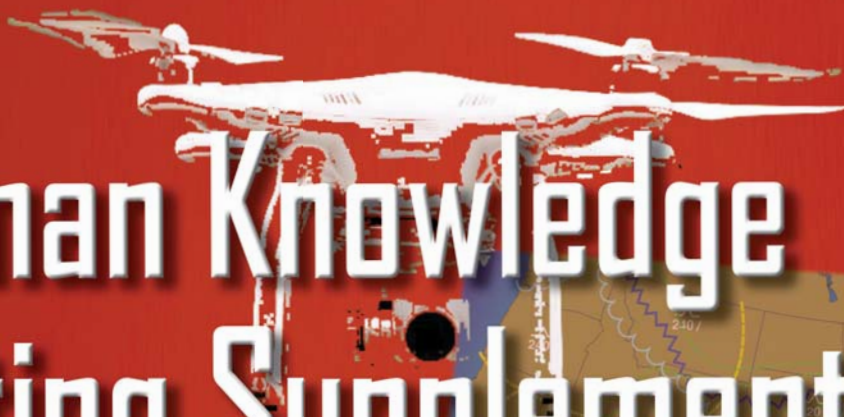


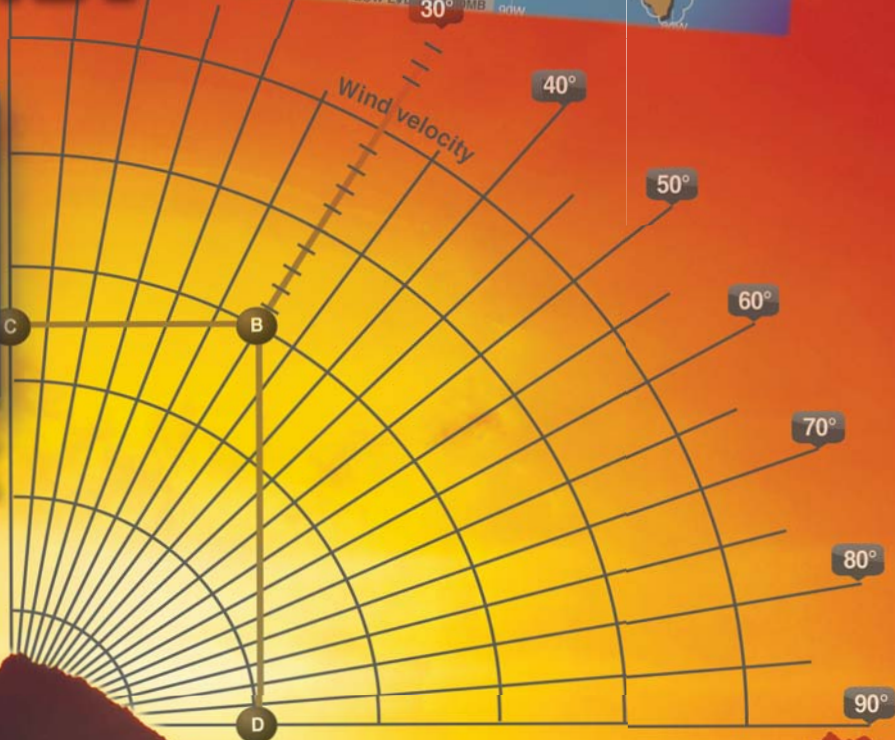
Airman Knowledge Testing Supplement for Sport Pilot, Recreational Pilot, Remote Pilot, and Private Pilot



U.S. Department
of Transportation
Federal Aviation
Administration



DO NOT MARK IN THIS BOOK



Airman Knowledge Testing Supplement for Sport Pilot, Recreational Pilot, Remote Pilot, and Private Pilot

2018

U.S. Department of Transportation
FEDERAL AVIATION ADMINISTRATION
Flight Standards Service

Appendix 2

METAR KINK 121845Z 11012G18KT 15SM SKC 25/17 A3000
METAR KBOI 121854Z 13004KT 30SM SCT150 17/6 A3015
METAR KLAX 121852Z 25004KT 6SM BR SCT007 SCT250 16/15 A2991
SPECI KMDW 121856Z 32005KT 1 1/2SM RA OVC007 17/16 A2980 RMK RAB35
SPECI KJFK 121853Z 18004KT 1/2SM FG R04/2200 OVC005 20/18 A3006

Figure 12. Aviation Routine Weather Reports (METAR).

TAF

KMEM 121720Z 1218/1324 20012KT 5SM HZ BKN030 PROB40 1220/1222 1SM TSRA OVC008CB
FM122200 33015G20KT P6SM BKN015 OVC025 PROB40 1220/1222 3SM SHRA
FM120200 35012KT OVC008 PROB40 1202/1205 2SM-RASN BECMG 1306/1308 02008KT BKN012
BECMG 1310/1312 00000KT 3SM BR SKC TEMPO 1212/1214 1/2SM FG
FM131600 VRB06KT P6SM SKC=

KOKC 051130Z 0512/0618 14008KT 5SM BR BKN030 TEMPO 0513/0516 1 1/2SM BR
FM051600 18010KT P6SM SKC BECMG 0522/0524 20013G20KT 4SM SHRA OVC020
PROB40 0600/0606 2SM TSRA OVC008CB BECMG 0606/0608 21015KT P6SM SCT040=

Figure 15. Terminal Aerodrome Forecasts (TAF).

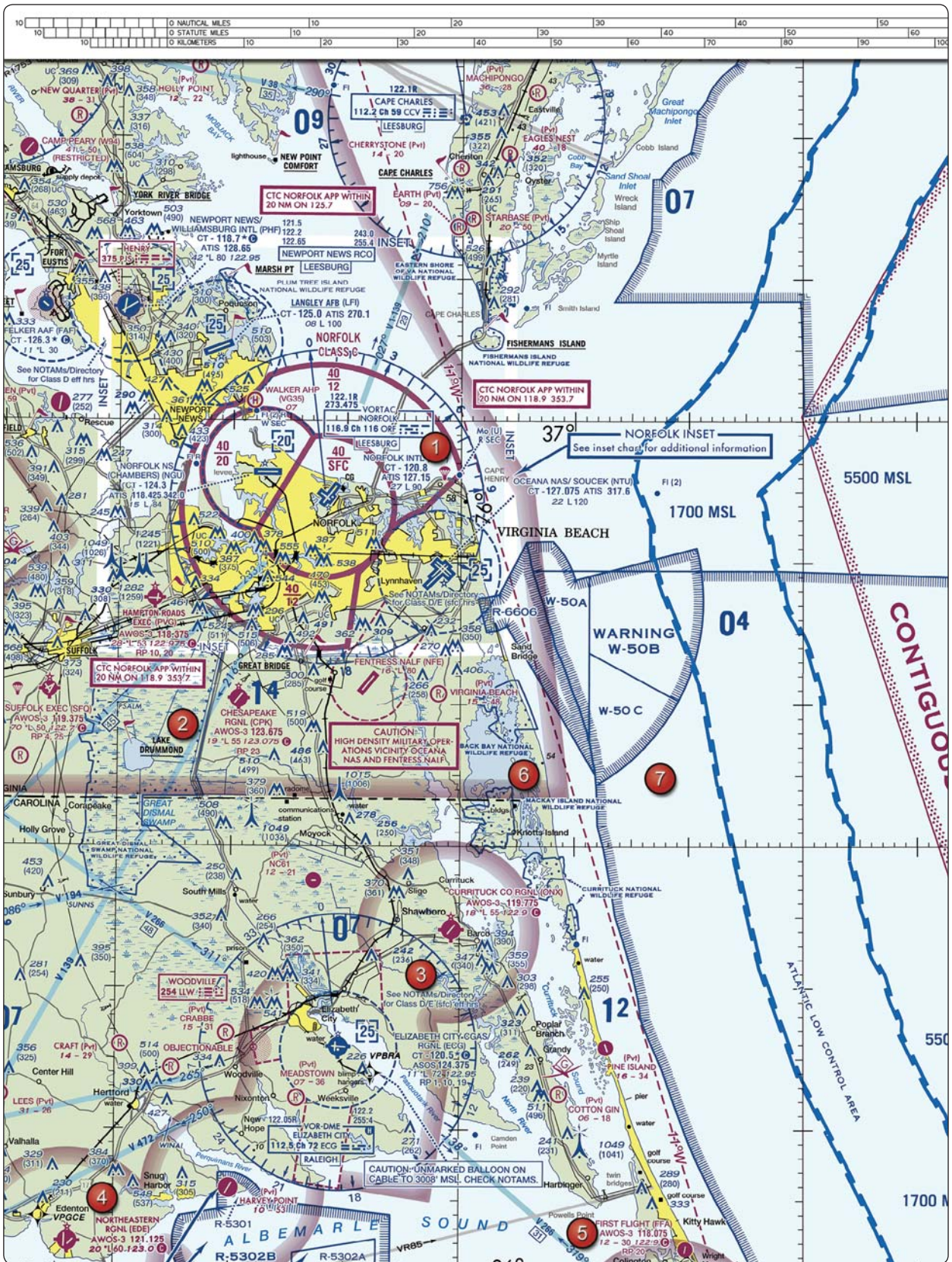


Figure 20. Sectional Chart Excerpt.

NOTE: Chart is not to scale and should not be used for navigation. Use associated scale.

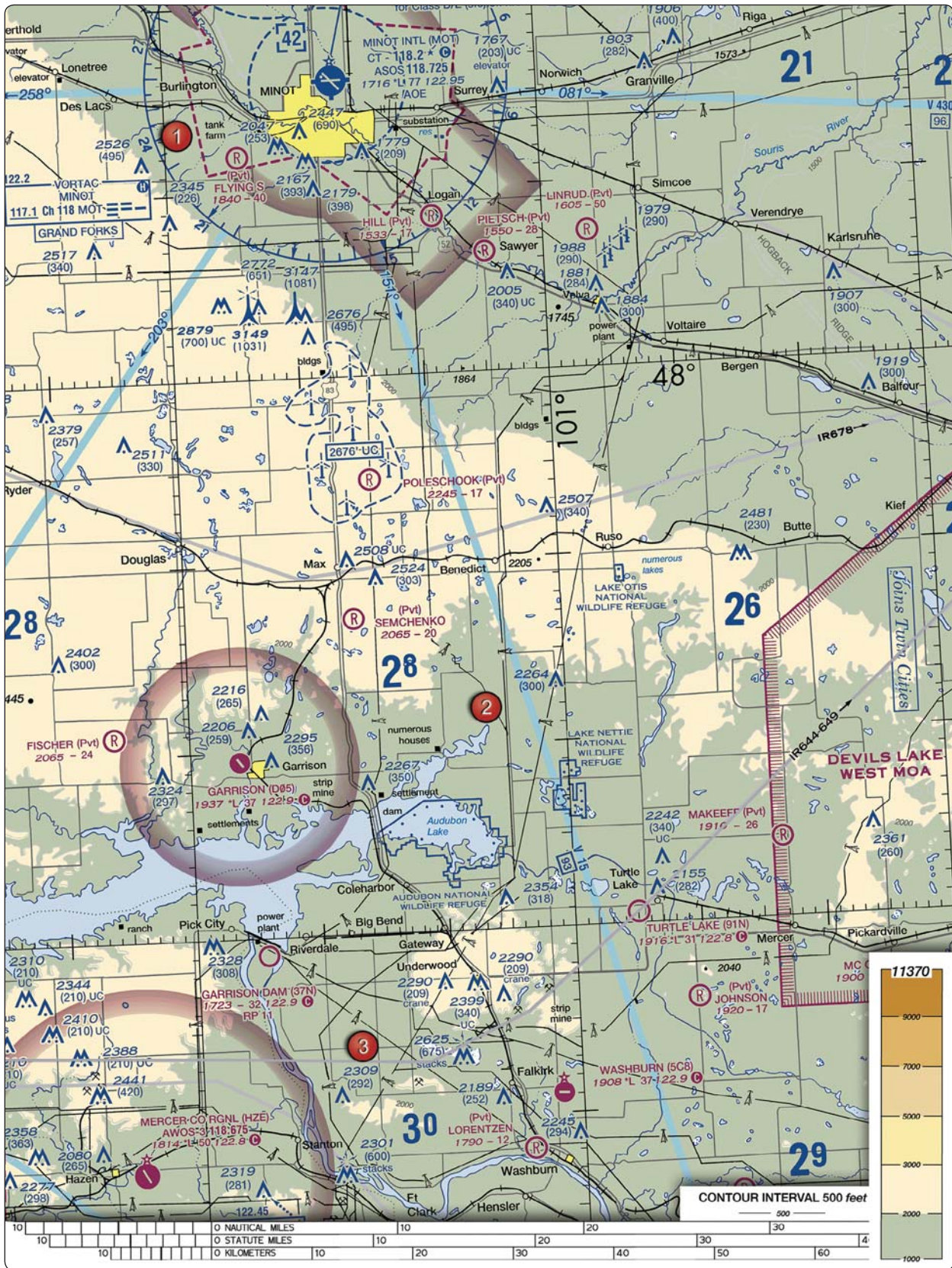


Figure 21. Sectional Chart Excerpt.

NOTE: Chart is not to scale and should not be used for navigation. Use associated scale.

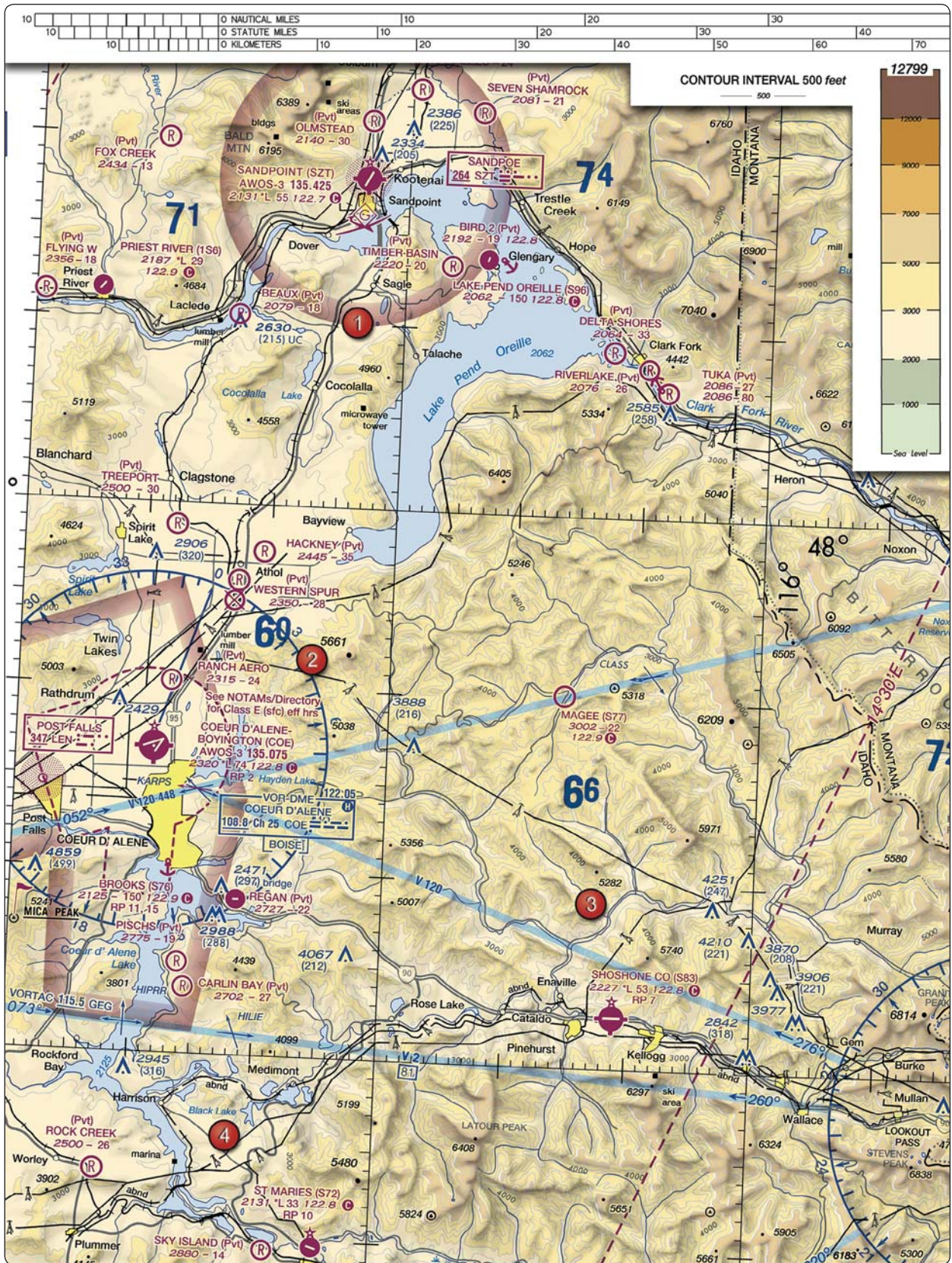


Figure 22. Sectional Chart Excerpt.

NOTE: Chart is not to scale and should not be used for navigation. Use associated scale.

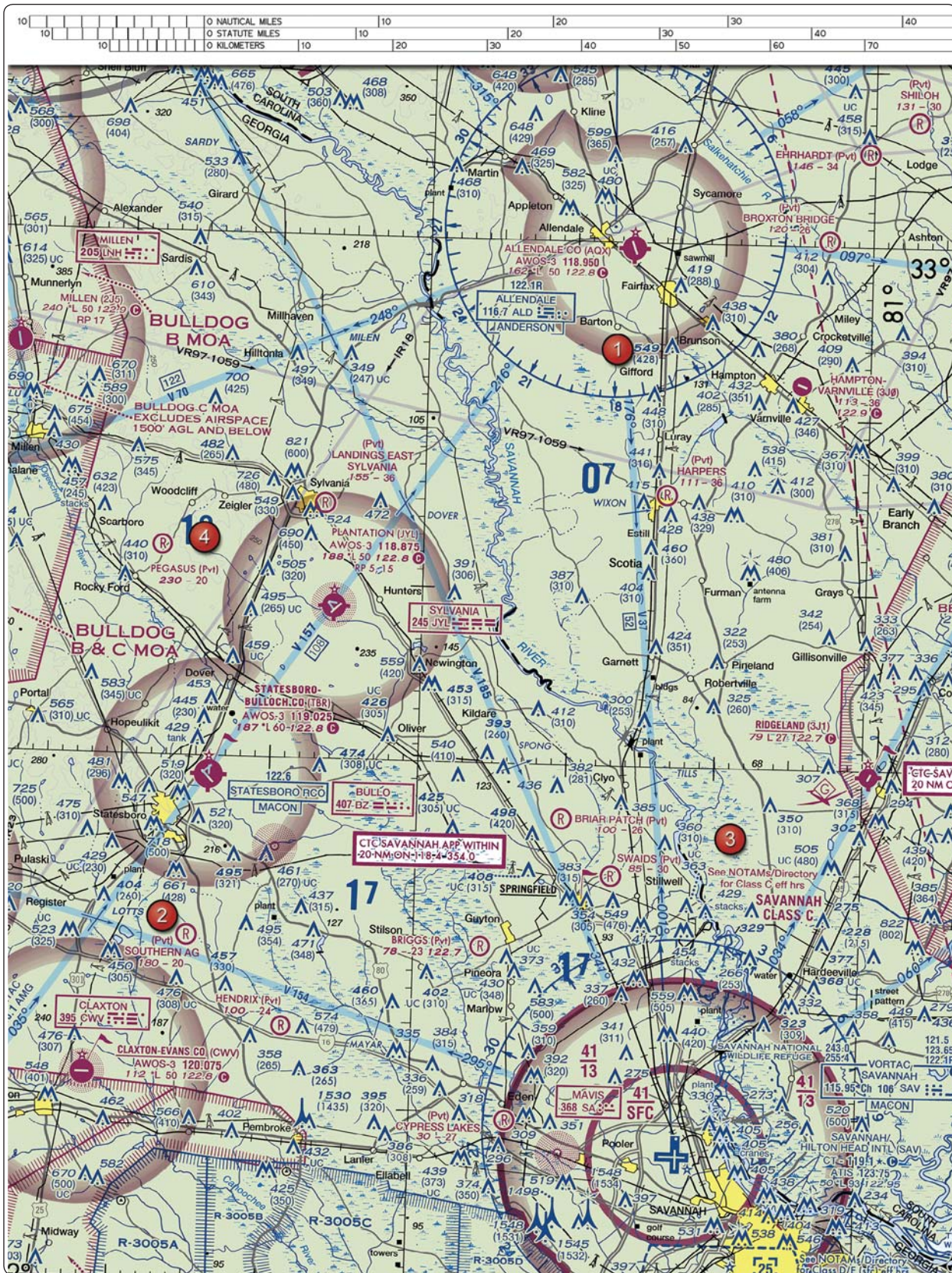


Figure 23. Sectional Chart Excerpt.

NOTE: Chart is not to scale and should not be used for navigation. Use associated scale.

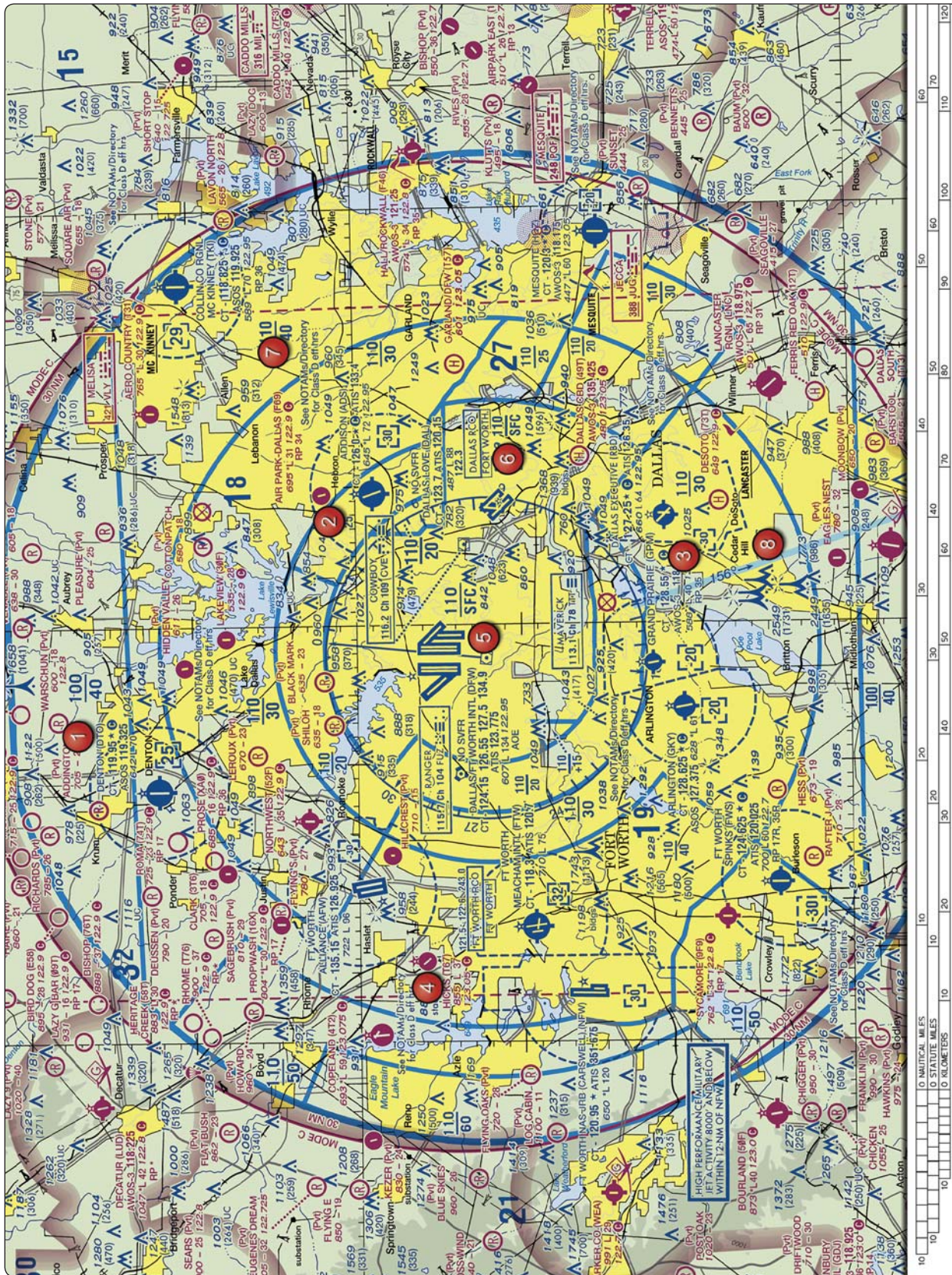


Figure 25. Sectional Chart Excerpt.

NOTE: Chart is not to scale and should not be used for navigation. Use associated scale.

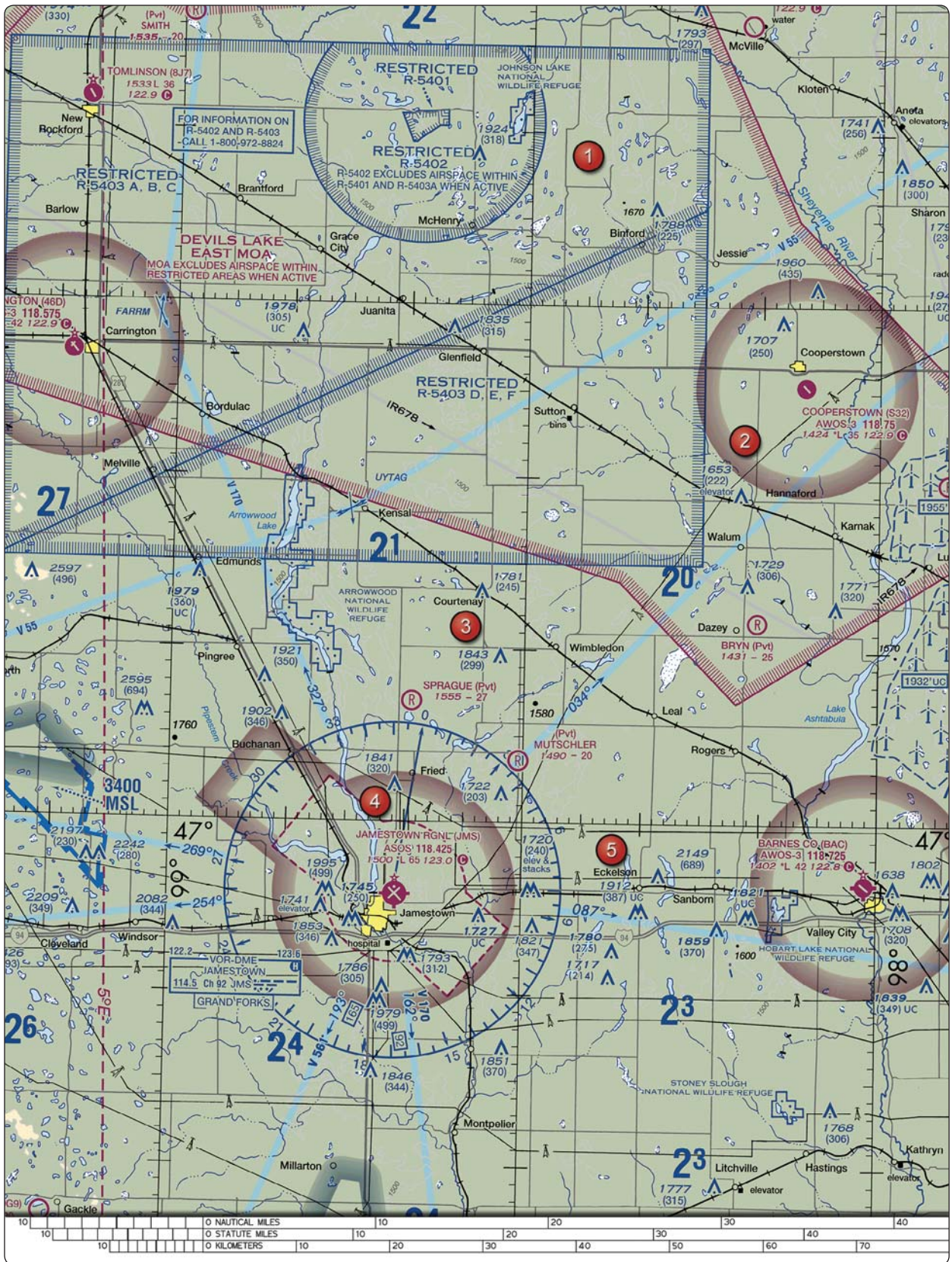


Figure 26. Sectional Chart Excerpt.

NOTE: Chart is not to scale and should not be used for navigation. Use associated scale.

COEUR D'ALENE-PAPPY BOYINGTON FLD (COE) 9 NW UTC-8(-7DT)

N47°46.46' W116°49.18'

GREAT FALLS

2320 B S4 FUEL 100, JET A OX 1, 2, 3, 4 Class IV, ARFF Index A NOTAM FILE COE

H-1C, L-13B

RWY 05-23: H7400X100 (ASPH-GRVD) S-57, D-95, 2S-121, 2D-165 HIRL 0.6% up NE IAP

RWY 05: MALSR (NSTD). PAPI(P4R)—GA 3.0° TCH 56'.

RWY 23: REIL. PAPI(P4R)—GA 3.0° TCH 50'.

RWY 01-19: H5400X75 (ASPH) S-50, D-83, 2S-105, 2D-150

MIRL 0.3% up N

RWY 01: REIL. PAPI(P2L)—GA 3.0° TCH 39'. Rgt t/c.

RWY 19: PAPI(P2L)—GA 3.0° TCH 41'.

RUNWAY DECLARED DISTANCE INFORMATION

RWY 01: TORA-5400 TODA-5400 ASDA-5400 LDA-5400

RWY 05: TORA-7400 TODA-7400 ASDA-7400 LDA-7400

RWY 19: TORA-5400 TODA-5400 ASDA-5400 LDA-5400

RWY 23: TORA-7400 TODA-7400 ASDA-7400 LDA-7400

AIRPORT REMARKS: Attended Mon-Fri 1500-0100Z†. For after hrs

fuel-self svc avbl or call 208-772-6404, 208-661-4174,

208-661-7449, 208-699-5433. Self svc fuel avbl with credit

card. 48 hr PPR for unscheduled ops with more than 30

passenger seats call arpt manager 208-446-1860. Migratory

birds on and invof arpt Oct-Nov. Remote cntl airstrip is 2.3 miles

west AER 05. Arpt conditions avbl on AWOS. Rwy 05 NSTD

MALSR, thid bar extends 5' byd rwy edge lgts each side. ACTIVATE

MIRL Rwy 01-19, HIRL Rwy 05-23, REIL Rwy 01 and Rwy 23, MALSR Rwy 05—CTAF. PAPI Rwy 01, Rwy 19, Rwy

05, and Rwy 23 opr continuously.

WEATHER DATA SOURCES: AWOS-3 135.075 (208) 772-8215.

HIWAS 108.8 COE.

COMMUNICATIONS: CTAF/UNICOM 122.8

RCD 122.05 (BOISE RADIO)

® SPOKANE APP/DEP CON 132.1

AIRSPACE: CLASS E svc continuous.

RADIO AIDS TO NAVIGATION: NOTAM FILE COE.

(T) VORW/DME 108.8 COE Chan 25 N47°46.42' W116°49.24' at fld. 2320/19E. HIWAS.

DME portion unusable:

220°-240° byd 15 NM 280°-315° byd 15 NM blo 11,000'.

POST FALLS NDB (MHW) 347 LEN N47°44.57' W116°57.66' 053° 6.0 NM to fld.

ILS 110.7 I-COE Rwy 05 Class ID. Localizer unusable 25° left and right of course.

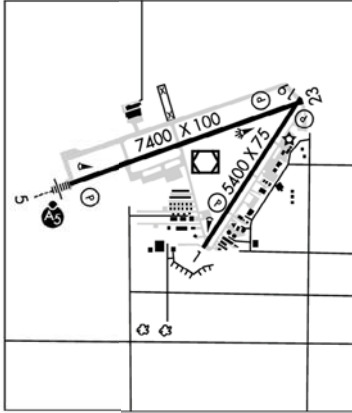


Figure 31. Chart Supplement.

NEBRASKA

271

LINCOLN (LNK) 4 NW UTC-6(-5DT) N40°51.05' W96°45.55'
 1219 B S4 FUEL 100LL, JET A TPA—See Remarks ARFF Index—See Remarks
 NOTAM FILE LNK

OMAHA
 H-5C, L-101
 IAP, AD

RWY 18-36: H12901X200 (ASPH-CONC-GRVD) S-100, D-200,
 2S-175, 2D-400 HIRL
RWY 18: MALSR. PAPI(P4L)—GA 3.0° TCH 55'. Rgt tfc. 0.4%
 down.
RWY 36: MALSR. PAPI(P4L)—GA 3.0° TCH 57'.
RWY 14-32: H8649X150 (ASPH-CONC-GRVD) S-80, D-170,
 2S-175, 2D-280 MIRL
RWY 14: REIL. VASI(V4L)—GA 3.0° TCH 48'. Thld dsplcd 363'.
RWY 32: VASI(V4L)—GA 3.0° TCH 50'. Thld dsplcd 470'.
 Pole. 0.3% up.
RWY 17-35: H5800X100 (ASPH-CONC-AFSC) S-49, D-60
 HIRL 0.8% up S
RWY 17: REIL. PAPI(P4L)—GA 3.0° TCH 44'.
RWY 35: ODALS. PAPI(P4L)—GA 3.0° TCH 30'. Rgt tfc.

RUNWAY DECLARED DISTANCE INFORMATION
RWY 14: TORA-8649 TODA-8649 ASDA-8649 LDA-8286
RWY 17: TORA-5800 TODA-5800 ASDA-5400 LDA-5400
RWY 18: TORA-12901 TODA-12901 ASDA-12901 LDA-12901
RWY 32: TORA-8649 TODA-8649 ASDA-8286 LDA-7816
RWY 35: TORA-5800 TODA-5800 ASDA-5800 LDA-5800
RWY 36: TORA-12901 TODA-12901 ASDA-12901 LDA-12901

AIRPORT REMARKS: Attended continuously. Birds invof arpt. Rwy 18 designated calm wind rwy. Rwy 32 apch holdline on South A twy. TPA-2219 (1000), heavy military jet 3000 (1781). Class I, ARFF Index B. ARFF Index C level equipment provided. Rwy 18-36 touchdown and rollout rwy visual range avbl. When twr clsd MIRL Rwy 14-32 preset on low ints, HIRL Rwy 18-36 and Rwy 17-35 preset on med ints, ODALS Rwy 35 operate continuously on med ints, MALSR Rwy 18 and Rwy 36 operate continuously and REIL Rwy 14 and Rwy 17 operate continuously on low ints. VASI Rwy 14 and Rwy 32, PAPI Rwy 17, Rwy 35, Rwy 18 and Rwy 36 on continuously.

WEATHER DATA SOURCES: ASOS (402) 474-9214. LLWAS
COMMUNICATIONS: CTAF 118.5 ATIS 118.05 UNICOM 122.95
 RCO 122.65 (COLUMBUS RADIO)

Ⓡ APP/DEP CON 124.0 (180°-359°) 124.8 (360°-179°)
 TOWER 118.5 125.7 (1130-0600Z†) GND CON 121.9 CLNC DEL 120.7

AIRSPACE: CLASS C svc 1130-0600Z† ctc APP CON other times CLASS E.

RADIO AIDS TO NAVIGATION: NOTAM FILE LNK.
 (H) VORTACW 116.1 LNK Chan 108 N40°55.43' W96°44.52' 181° 4.4 NM to fld. 1370/9E
 POTTS NDB (MHW/LOM) 385 LN N40°44.83' W96°45.75' 355° 6.2 NM to fld. Unmonitored when twr clsd.
 ILS 111.1 I-OCZ Rwy 18. Class IB OM unmonitored.
 ILS 109.9 I-LNK Rwy 36 Class IA LOM POTTS NDB. MM unmonitored. LOM unmonitored when twr clsd.

COMM/NAV/WEATHER REMARKS: Emerg frequency 121.5 not available at twr.



LOUP CITY MUNI (ØF4) 1 NW UTC-6(-5DT) N41°17.20' W98°59.41'
 2071 B FUEL 100LL NOTAM FILE OLU

OMAHA
 L-10H, 12H

RWY 16-34: H3200X60 (CONC) S-12.5 MIRL
RWY 34: Trees.
RWY 04-22: 2040X100 (TURF)
RWY 04: Tree. **RWY 22:** Road.

AIRPORT REMARKS: Unattended. For svc call 308-745-1344/1244/0664.

COMMUNICATIONS: CTAF 122.9

RADIO AIDS TO NAVIGATION: NOTAM FILE OLU.

WOLBACH (H) VORTAC 114.8 OBH Chan 95 N41°22.54' W98°21.22' 253° 29.3 NM to fld. 2010/7E.

MARTIN FLD (See SO SIOUX CITY)

Figure 52. Chart Supplement.



Figure 70. Sectional Chart Excerpt.

NOTE: Chart is not to scale and should not be used for navigation. Use associated scale.



Figure 74. Sectional Chart Excerpt.

NOTE: Chart is not to scale and should not be used for navigation. Use associated scale.



Figure 76. Sectional Chart Excerpt.

NOTE: Chart is not to scale and should not be used for navigation. Use associated scale.

340

SOUTH DAKOTA

PIERRE RGNL (PIR) 3 E UTC -6(-5DT) N44°22.96' W100°17.16' **OMAHA**
H-21, L-12H
IAP

1744 B S4 FUEL 100LL, JET A OX 1, 2, 3, 4 Class I, ARFF Index A NOTAM FILE PIR

RWY 13-31: H6900X100 (ASPH-GRVD) S-91, D-108, 2S-137, 2D-168 HIRL

RWY 13: REIL. PAPI(P4L)-GA 3.0 ° TCH 52'.

RWY 31: MALSR. PAPI(P4L)-GA 3.0 ° TCH 52'.

RWY 07-25: H6881X150 (ASPH-GRVD) S-91, D-114, 2S-145, 2D-180 HIRL 0.6% up W

RWY 07: REIL. PAPI(P4L)-GA 3.0 ° TCH 47'. Tank.

RWY 25: REIL. PAPI(P4L)-GA 3.0 ° TCH 54'.

RUNWAY DECLARED DISTANCE INFORMATION

RWY 07: TORA-6881 TODA-6881 ASDA-6830 LDA-6830

RWY 13: TORA-6900 TODA-6900 ASDA-6900 LDA-6900

RWY 25: TORA-6881 TODA-6881 ASDA-6881 LDA-6881

RWY 31: TORA-6900 TODA-6900 ASDA-6900 LDA-6900

AIRPORT REMARKS: Attended Mon-Fri 1100-0600Z, Sat-Sun 1100-0400Z. For attendant other times call 605-224-9000/8621. Arpt conditions unmonitored during 0530-1000Z. Numerous non-radio acft operating in area. Birds on and in/ov arpt and within a 25 NM radius. No line of sight between rwy ends of Rwy 07-25. ARFF provided for part 121 air carrier ops only. 48 hr PPR for unscheduled acr ops involving acft designed for 31 or more passenger seats call 605-773-7447 or 605-773-7405. Taxiway C is 50' wide and restricted to acft 75,000 pounds or less. ACTIVATE HIRL Rwy 13-31 and Rwy 07-25, MALSR Rwy 31, REIL Rwy 07, Rwy 13 and Rwy 25, PAPI Rwy 07, Rwy 25, Rwy 13 and Rwy 31-CTAF 122.7. NOTE: See Special Notices Section—Aerobatic Practice Areas.

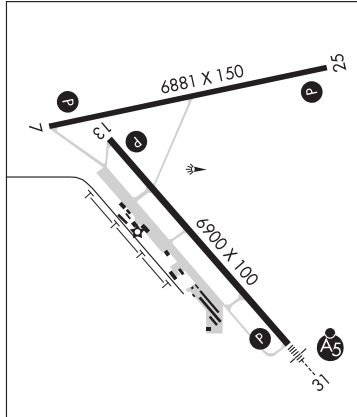
WEATHER DATA SOURCES: ASOS 119.025 (605) 224-6087. **HIWAS** 112.5 PIR.

COMMUNICATIONS: CTAF 122.7 UNICOM 122.95
RCO 122.2 (HURON RADIO)

Ⓜ **MINNEAPOLIS CENTER APP/DEP CON** 125.1

RADIO AIDS TO NAVIGATION: NOTAM FILE PIR.

(L) **VORTACW** 112.5 PIR Chan 72 N44°23.67' W100°09.77' 251° 5.3 NM to fld. 1789/11E. **HIWAS.**
ILS/DME 111.9 I-PIR Chan 56 Rwy 31. Class IA ILS GS unusable for coupled apch blo 2,255'. GS unusable blo 2135'.



PINE RIDGE (IEN) 2 E UTC -7(-6DT) N43°01.35' W102°30.66' **CHEYENNE**
H-5B, L-12G
IAP

3333 B NOTAM FILE IEN

RWY 12-30: H5000X60 (ASPH) S-12 MIRL 0.7% up SE

RWY 12: P-line.

RWY 30: PAPI(P2L)-GA 3.0 ° TCH 26'. Fence.

RWY 06-24: H3003X50 (ASPH) S-12 0.7% up NE

RWY 24: Fence.

AIRPORT REMARKS: Unattended. Rwy 06-24 CLOSED indef. MIRL Rwy 12-30 and PAPI Rwy 30 opr dusk-0530Z, after 0530Z activate-CTAF.

WEATHER DATA SOURCES: ASOS 126.775 (605) 867-1584.

COMMUNICATIONS: CTAF 122.9

DENVER CENTER APP/DEP CON 127.95

RADIO AIDS TO NAVIGATION: NOTAM FILE RAP.

RAPID CITY (H) VORTAC 112.3 RAP Chan 70 N43°58.56' W103°00.74' 146° 61.3 NM to fld. 3160/13E.

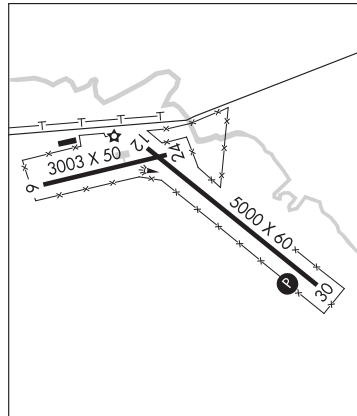


Figure 77. Chart Supplement.

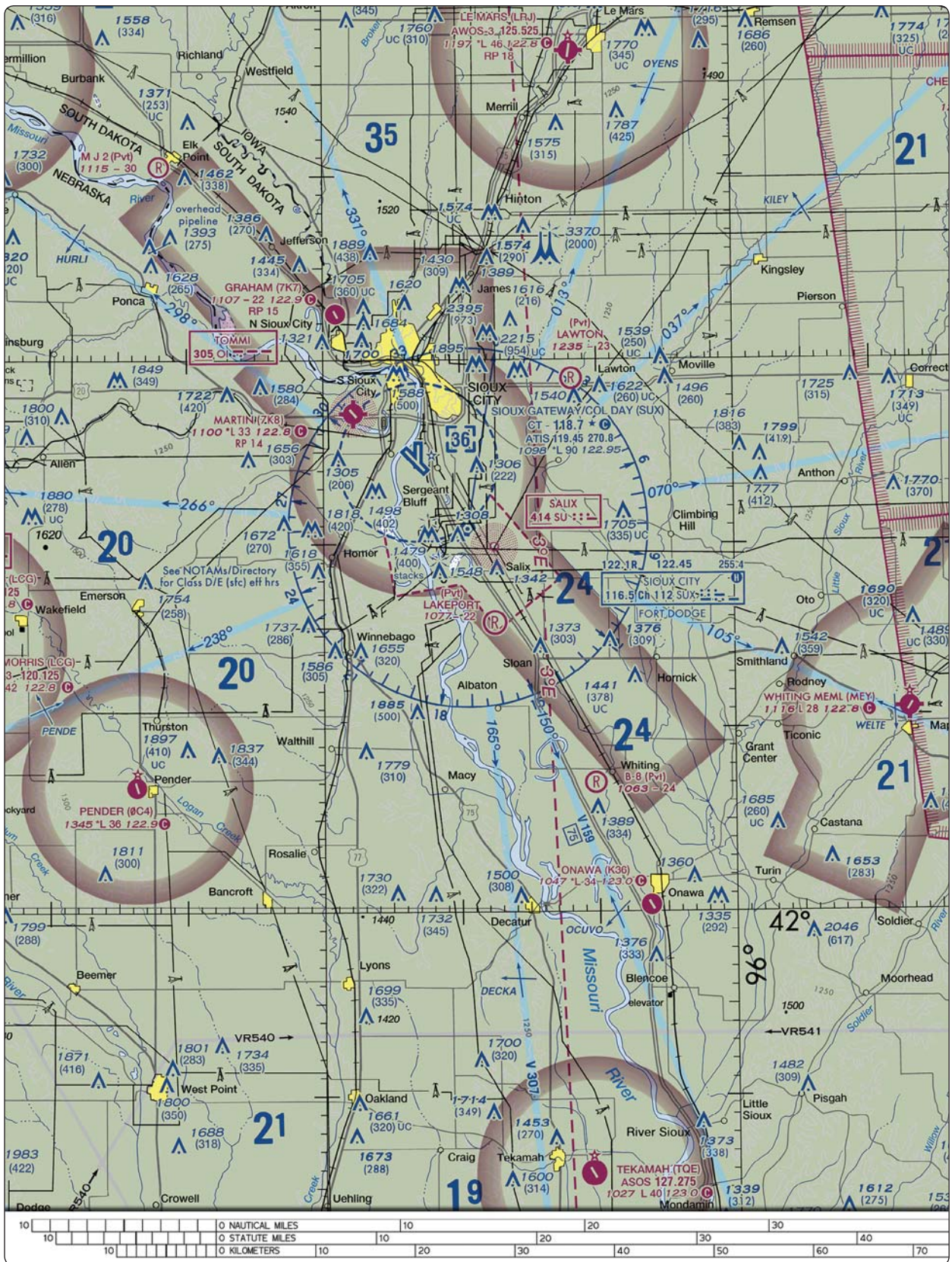


Figure 78. Sectional Chart Excerpt.

NOTE: Chart is not to scale and should not be used for navigation. Use associated scale.

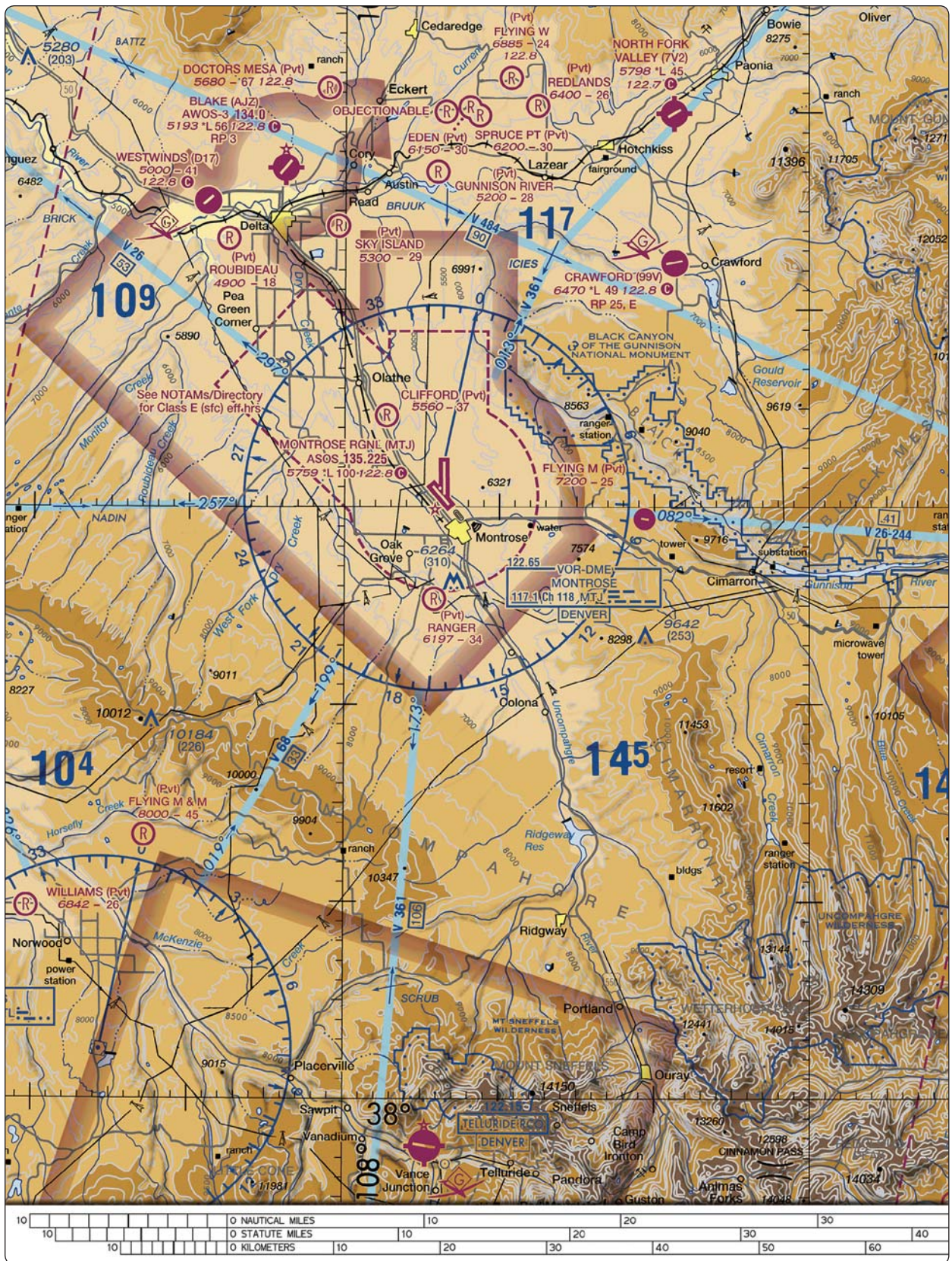


Figure 80. Sectional Chart Excerpt.

NOTE: Chart is not to scale and should not be used for navigation. Use associated scale.

216

COLORADO

CRAWFORD (99V) 2 W UTC -7(-6DT) N38°42.25' W107°38.62' DENVER
L-9E
 6470 S2 OX 4 TPA-7470(1000) NOTAM FILE DEN
RWY 07-25: H4900X20 (ASPH) LIRL (NSTD)
RWY 07: VASI (NSTD). Trees. **RWY 25:** VASI (NSTD) Tank. Rgt tfc.
RWY E-W: 2500X125 (TURF)
RWY E: Rgt tfc. **RWY W:** Trees.
AIRPORT REMARKS: Attended continuously. Rwy 07-25 west 1300' only 25' wide. Heavy glider ops at arpt. Land to the east tkf to the west winds permitting. 100LL fuel avbl for emergency use only. Pedestrians, motor vehicles, deer and wildlife on and invof arpt. Unlimited vehicle use on arpt. Rwy West has +15' building 170' from thld 30' left, +10' road 100' from thld centerline. +45' tree 100' L of Rwy 07 extended centerline 414' from rwy end. -8' to -20' terrain off both sides of first 674' of Rwy 25 end. E-W rwy occasionally has 6 inch diameter irrigation pipes crossing rwy width in various places. Rwy 07 has 20' trees and -10' to 20' terrain 20' right of rwy first 150'. E-W rwy consists of +12 inch alfalfa vegetation during various times of the year. Arpt lgts opr dusk-0800Z+. Rwy 07 1 box VASI left side for local operators only or PPR call 970-921-7700 or 970-921-3018. Rwy 07-25 LIRL on N side from Rwy 25 end W 3800'. Rwy 07 1300' from end E 300'. No thld lgts Rwy 07-25 3800' usable for ngt ops.
COMMUNICATIONS: CTAF/UNICOM 122.8
RADIO AIDS TO NAVIGATION: NOTAM FILE MTJ.
MONTRÖSE (H) VORW/DME 117.1 MTJ Chan 118 N38°30.39' W107°53.96' 033° 16.9 NM to fld. 5713/12E.

CREEDE

MINERAL CO MEM (C24) 2 E UTC -7(-6DT) N37°49.33' W106°55.79' DENVER
H-3E, L-9E
 8680 NOTAM FILE DEN
RWY 07-25: H6880X60 (ASPH) S-12.5, D-70, 2D-110
RWY 07: Thld dsplcd 188'. **RWY 25:** Road.
AIRPORT REMARKS: Unattended. Elk and deer on and invof arpt. Glider and hang glider activity on and in vicinity of arpt. Mountains in all directions. Departure to NE avoid over flight of trailers and resident homes, climb to 200' above ground level on centerline extended prior to turn. Acft stay to right of valley on apch and/or departure route. 2' cable fence around apron.
COMMUNICATIONS: CTAF 122.9
RADIO AIDS TO NAVIGATION: NOTAM FILE DEN.
BLUE MESA (H) VORW/DME 114.9 HBU Chan 96 N38°27.13' W107°02.39' 158° 38.1 NM to fld. 8730/14E.

CUCHARA VALLEY AT LA VETA (See LA VETA)

DEL NORTE

ASTRONAUT KENT ROMINGER (8V1) 3 N UTC -7(-6DT) N37°42.83' W106°21.11' DENVER
H-3E, L-9E
 7949 NOTAM FILE DEN
RWY 06-24: 6050X75 (ASPH) 1.1% up SW
RWY 03-21: 4670X60 (TURF-DIRT)
RWY 21: Mountain.
AIRPORT REMARKS: Unattended. Wildlife on and invof arpt. Unlimited vehicle access on arpt. Mountainous terrain surrounds arpt in all directions.
COMMUNICATIONS: CTAF 122.9
RADIO AIDS TO NAVIGATION: NOTAM FILE ALS.
ALAMOSA (H) VORTACW 113.9 ALS Chan 86 N37°20.95' W105°48.93' 298° 33.7 NM to fld. 7535/13E.

Figure 81. Chart Supplement.